

Kartat hankevaihtoehtoista

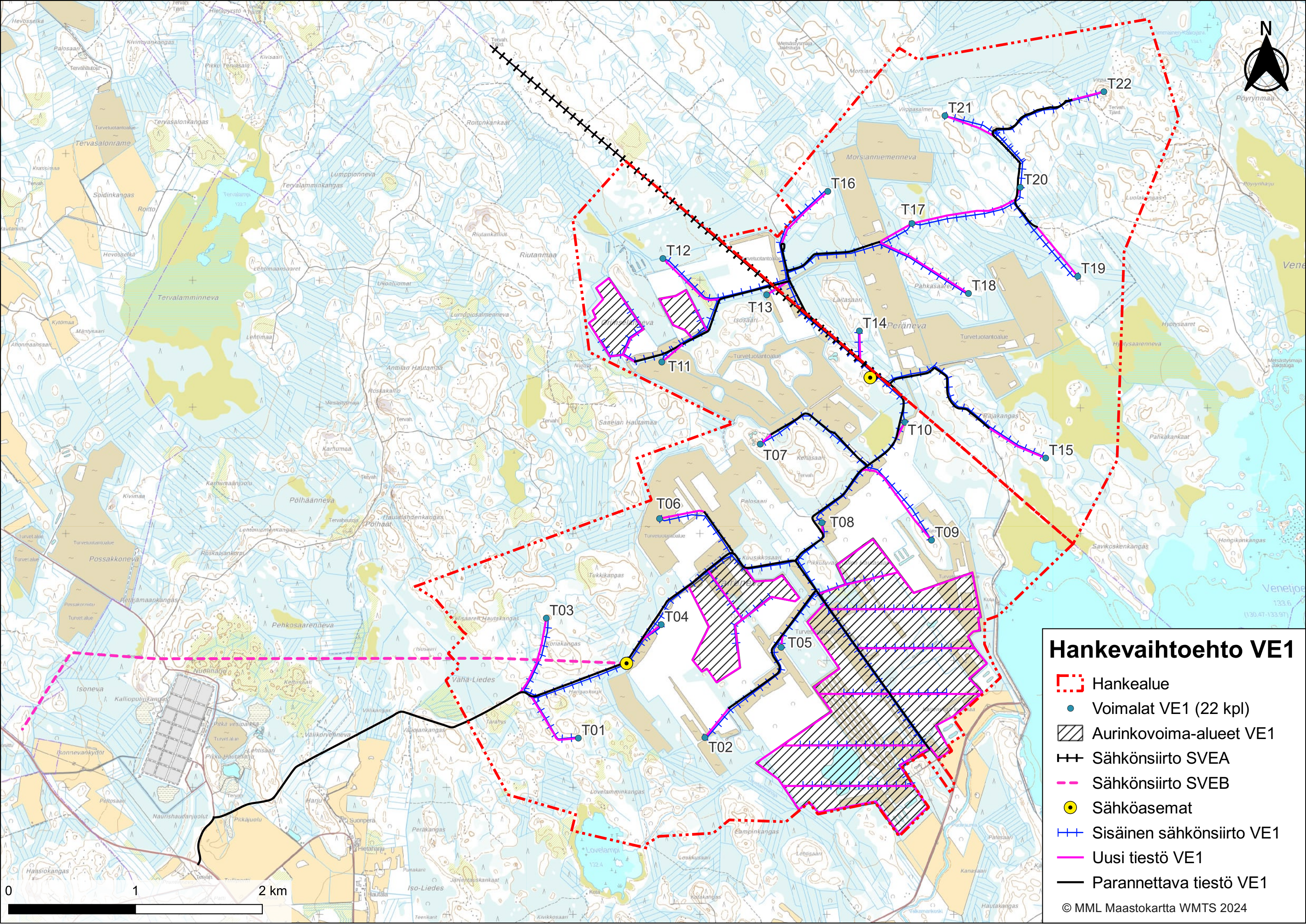
LIITE 12

Neova Oy



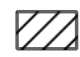
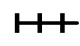





FCG Finnish Consulting Group Oy

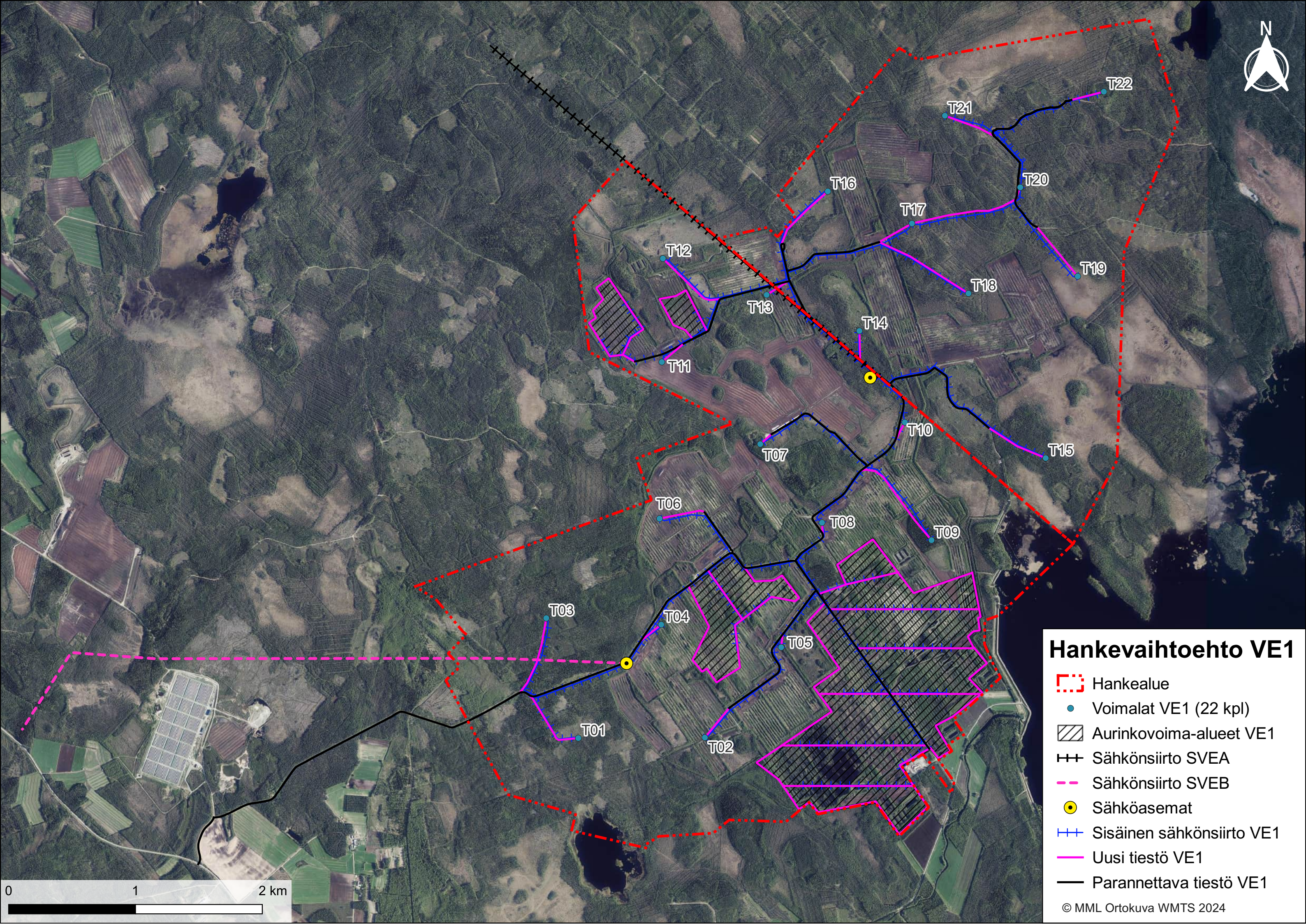
7.3.2024

P44728




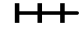







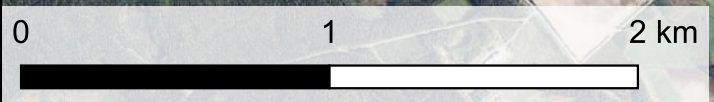
Hankevaihtoehto VE1

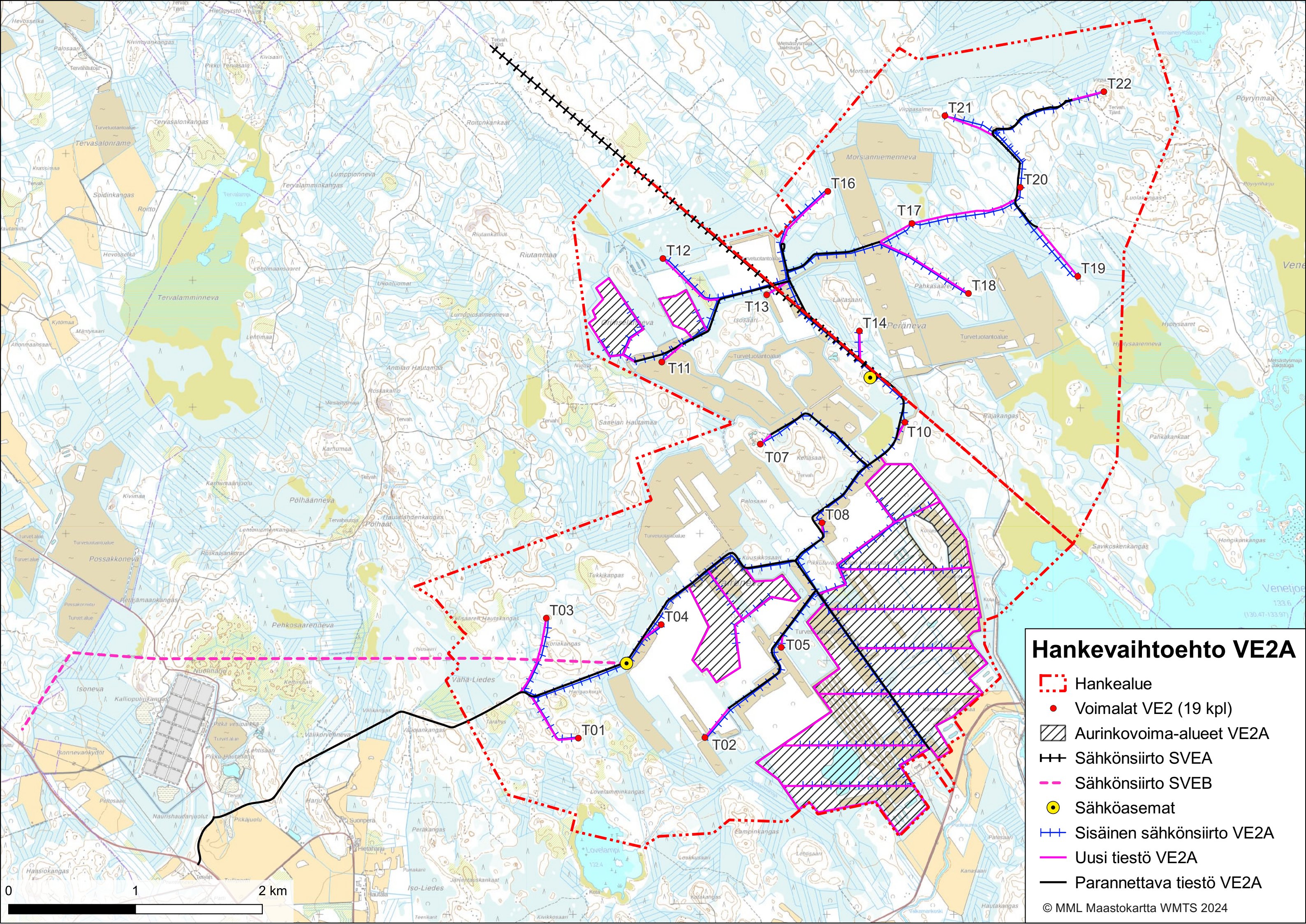
-  Hankealue
-  Voimalat VE1 (22 kpl)
-  Aurinkovoima-alueet VE1
-  Sähkönsiirto SVEA
-  Sähkönsiirto SVEB
-  Sähköasemat
-  Sisäinen sähkönsiirto VE1
-  Uusi tiestö VE1
-  Parannettava tiestö VE1



Hankevaihtoehto VE1

-  Hankealue
-  Voimalat VE1 (22 kpl)
-  Aurinkovoima-alueet VE1
-  Sähkösiirto SVEA
-  Sähkösiirto SVEB
-  Sähköasemat
-  Sisäinen sähkösiirto VE1
-  Uusi tiestö VE1
-  Parannettava tiestö VE1

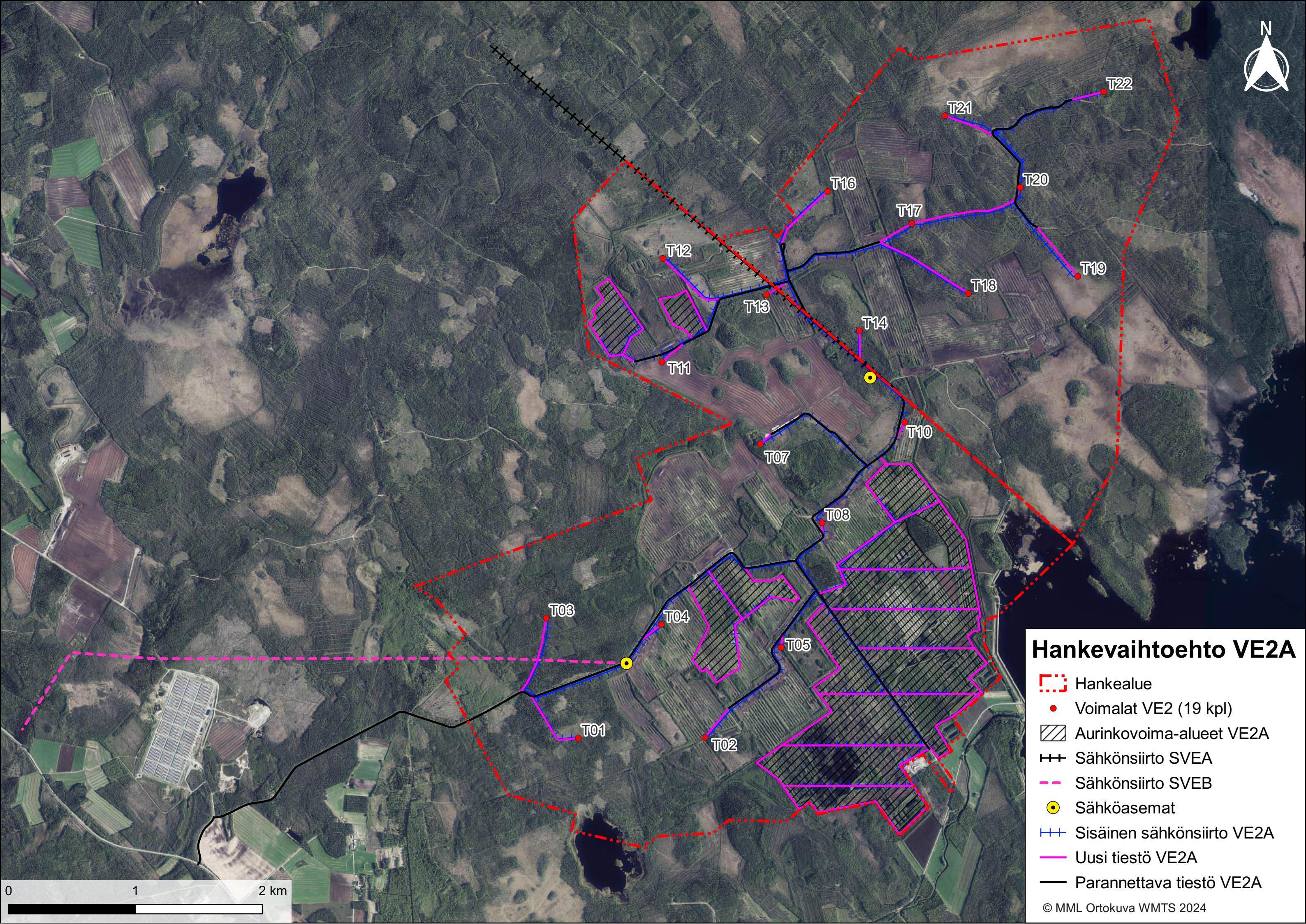




Hankevaihtoehto VE2A

- ⋯ Hankealue
- Voimalat VE2 (19 kpl)
- Aurinkovoima-alueet VE2A
- ⚡ Sähkönsiirto SVEA
- ⋯ Sähkönsiirto SVEB
- Sähköasemat
- ⚡ Sisäinen sähkönsiirto VE2A
- Uusi tiestö VE2A
- Parannettava tiestö VE2A

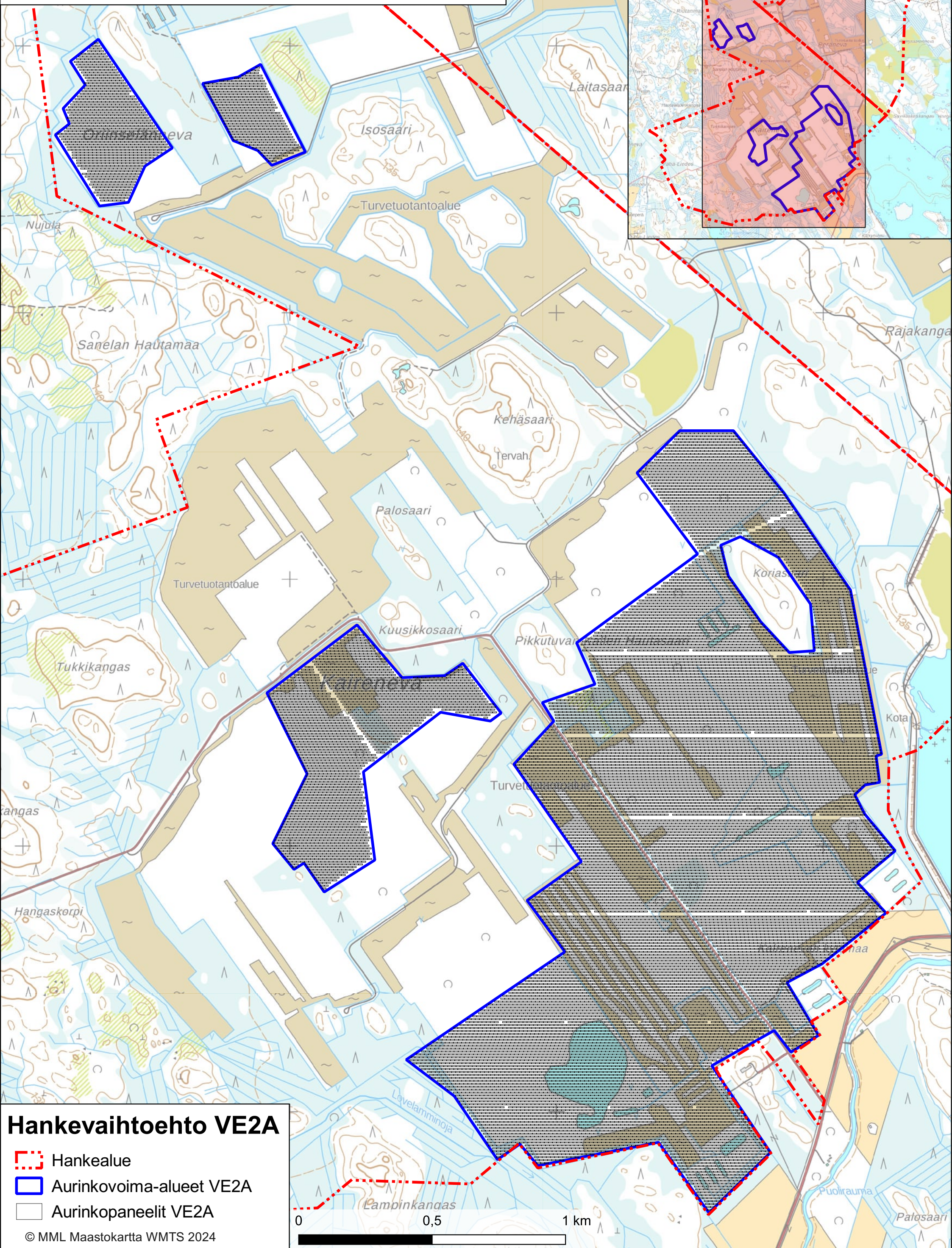







Hankevaihtoeto VE2A

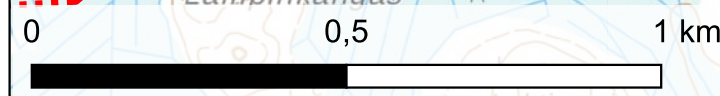
- Hankealue
- Voimalat VE2 (19 kpl)
- Aurinkovoima-alueet VE2A
- Sähkösiirto SVEA
- Sähkösiirto SVEB
- Sähköasemat
- Sisäinen sähkösiirto VE2A
- Uusi tiestö VE2A
- Parannettava tiestö VE2A

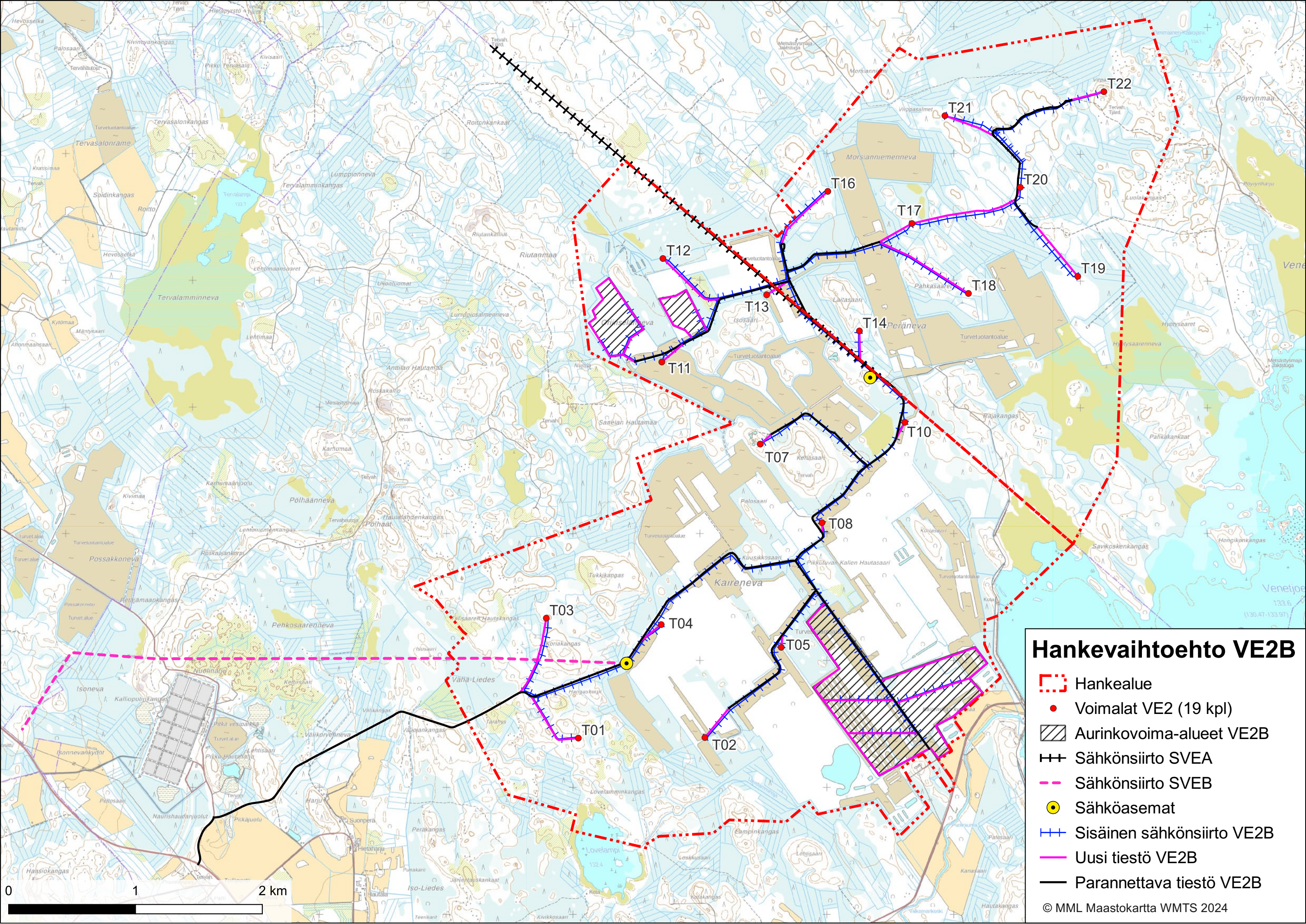
Lähikartta aurinkopaneelien sijoitus- suunnitelmasta vaihtoehdossa VE2A (suurin vaihtoehto aurinkovoiman osalta)



Hankevaihtoehto VE2A

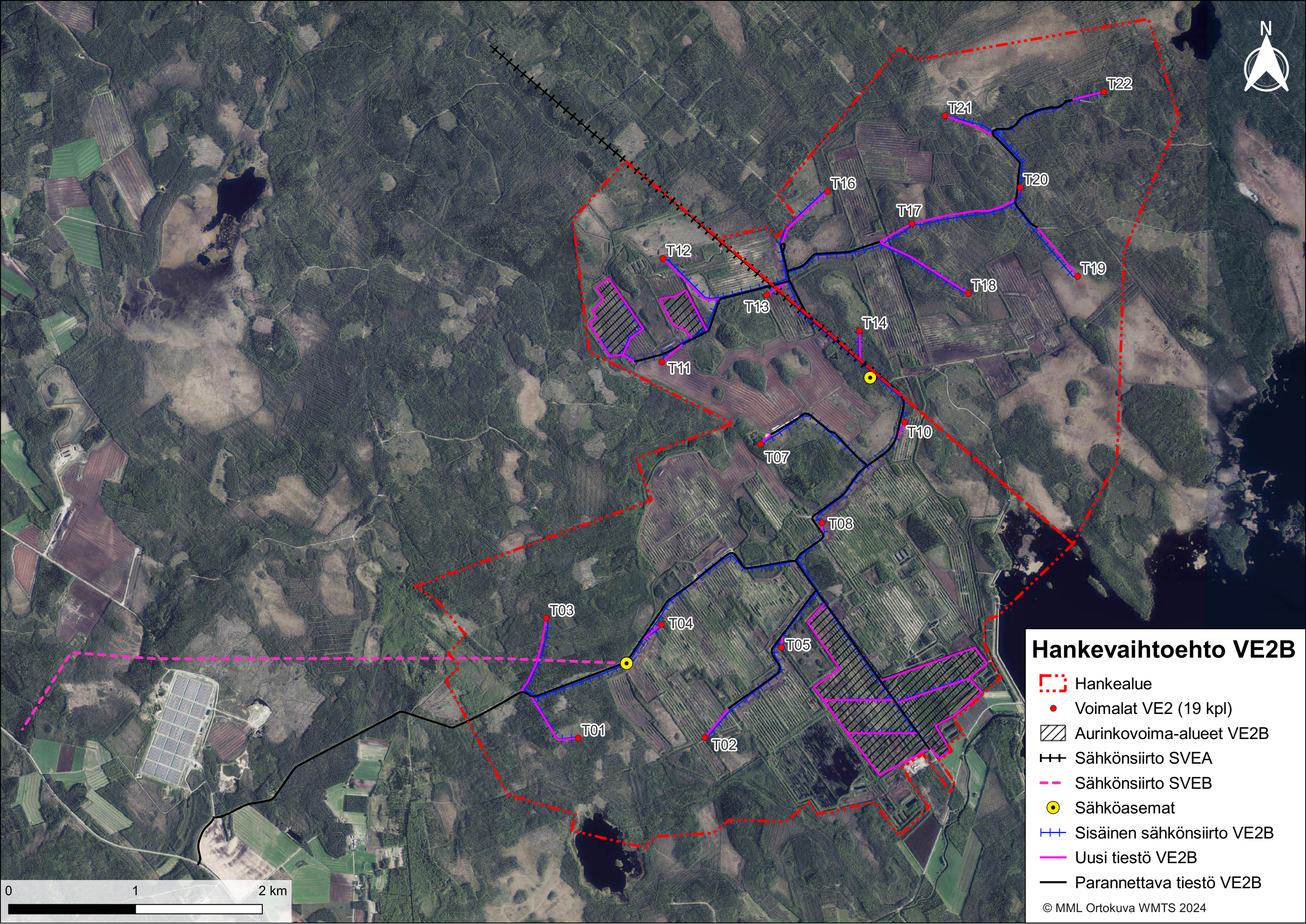
-  Hankealue
-  Aurinkovoima-alueet VE2A
-  Aurinkopaneelit VE2A














Hankevaihtoeto VE2B

- - - Hankealue
- Voimat VE2 (19 kpl)
- Aurinkovoima-alueet VE2B
- ++ Sähkönsiirto SVEA
- - - Sähkönsiirto SVEB
- Sähköasemat
- ++ Sisäinen sähkönsiirto VE2B
- Uusi tiestö VE2B
- Parannettava tiestö VE2B



Hankevaihtoeto VE2B

-  Hankealue
-  Voimalat VE2 (19 kpl)
-  Aurinkovoima-alueet VE2B
-  Sähkösiirto SVEA
-  Sähkösiirto SVEB
-  Sähköasemat
-  Sisäinen sähkösiirto VE2B
-  Uusi tiestö VE2B
-  Parannettava tiestö VE2B