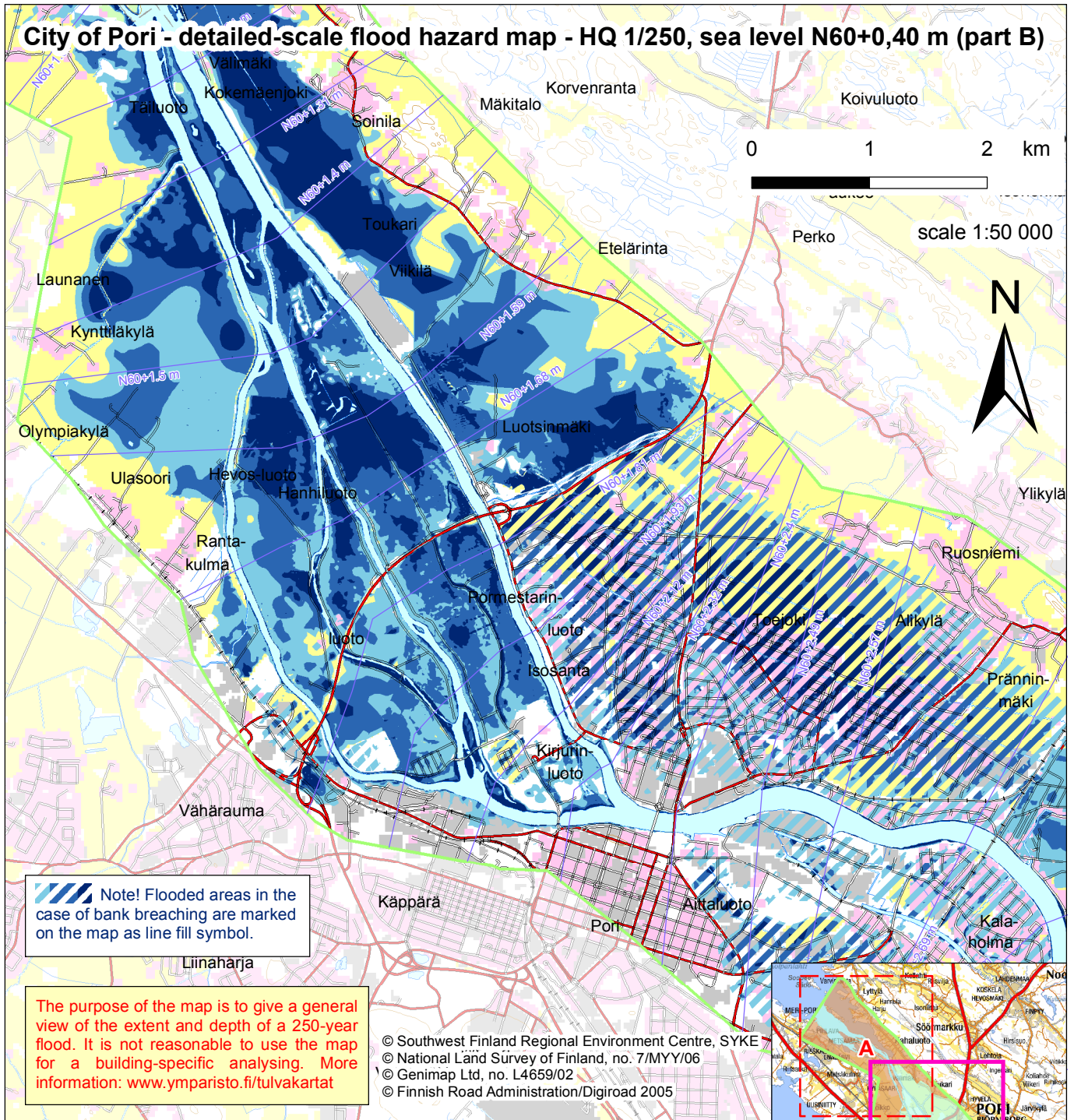


City of Pori - detailed-scale flood hazard map - HQ 1/250, sea level N60+0,40 m (part B)



Water depth, HQ 1/250

- flood protected area
- 0...0,5 m
- 0,5...1 m
- yli 1 m
- water body

- continuous urban fabric
- industrial units
- discontinuous urban fabric
- agricultural areas
- airports and port areas

Elevation data

- modelled area
- base map of municipality
- national DEM 10 m
- water level line
- contour line, interval 10 m

Location:	City of Pori (Kokemäenjoki watershed)	Discharge value:	1225 m ³ /s
Flood map type:	Detailed-scale flood hazard map	Discharge station:	3510450 Harjavalta
Return period:	HQ 1/250, fluvial flood	Discharge calculation:	Statistical analysis (Gumbel-distribution)
Scale:	1:50 000 (can be presented also using terrain map 1:20 000)	Water level calculation:	1D-hydraulic model
Topographic information:	Base map of the municipality, improved by NLS 10 m DEM in the border area	Sea level (downstream boundary condition):	N60+0,40 m
Date:	12.10.2006	Author:	SYKE/VES/JA

