

Cormorant population of Finland

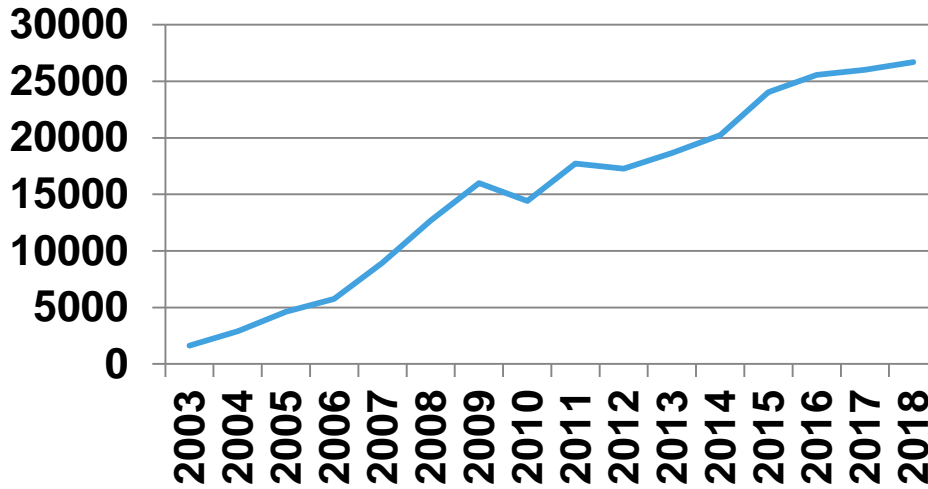
Finnish Environment Institute (SYKE)

Pekka Rusanen

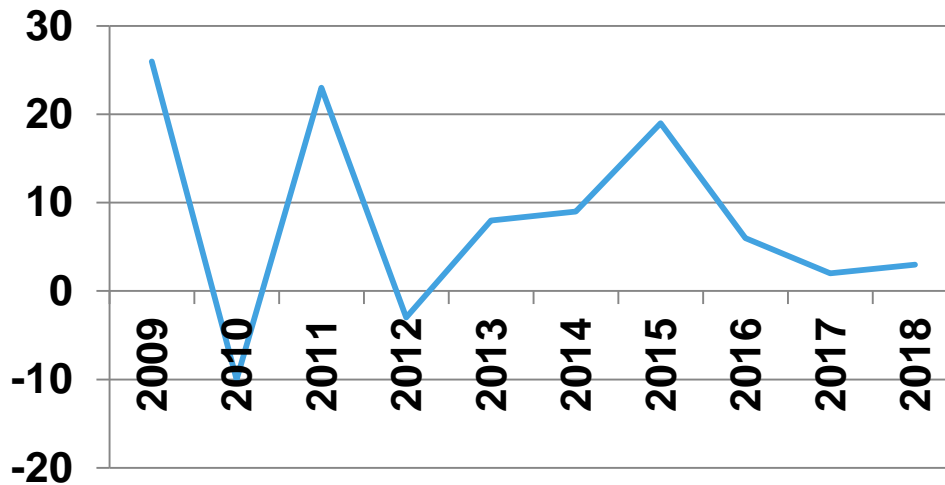
6.11.2018



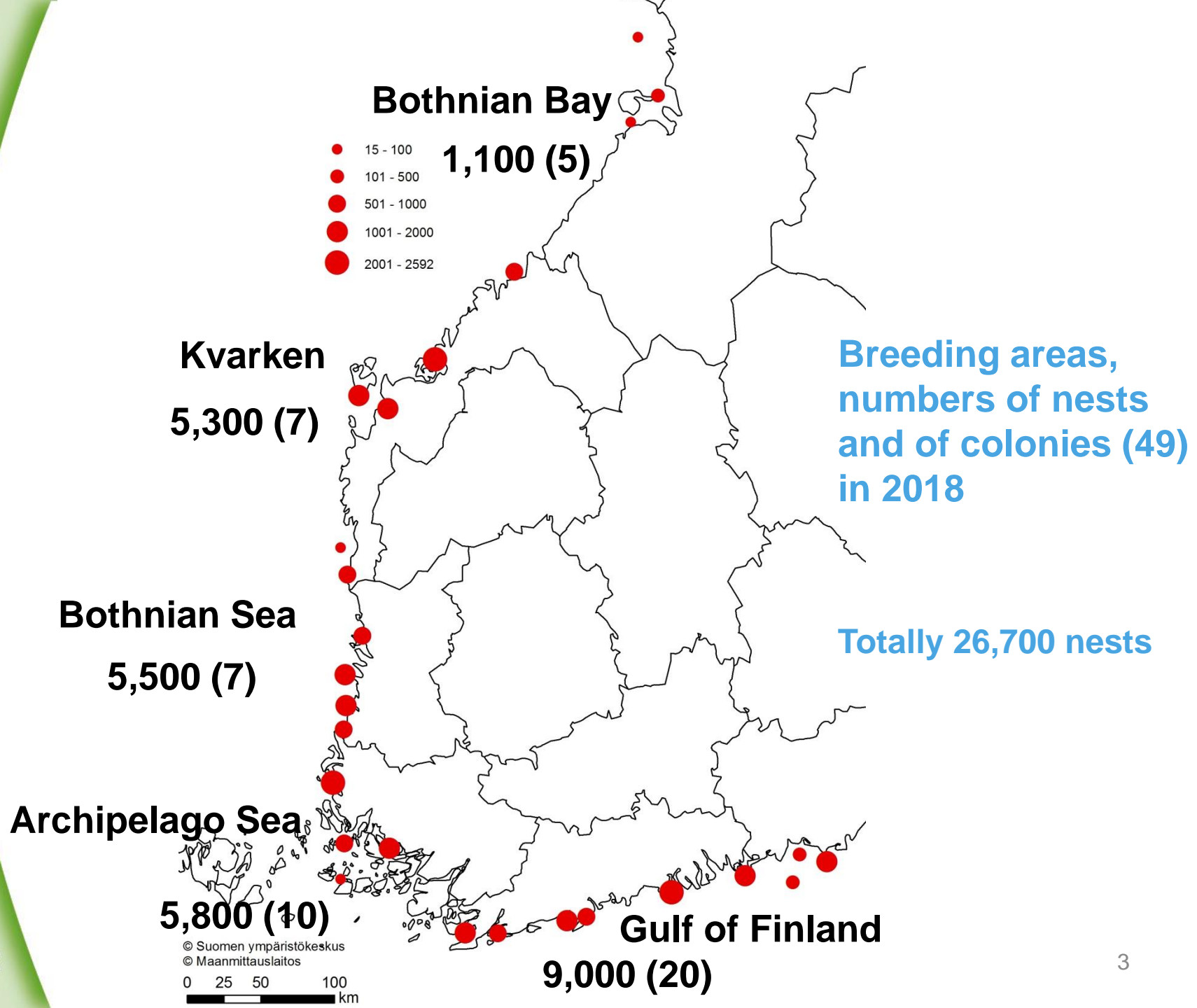
Foto: Heikki Kotiranta

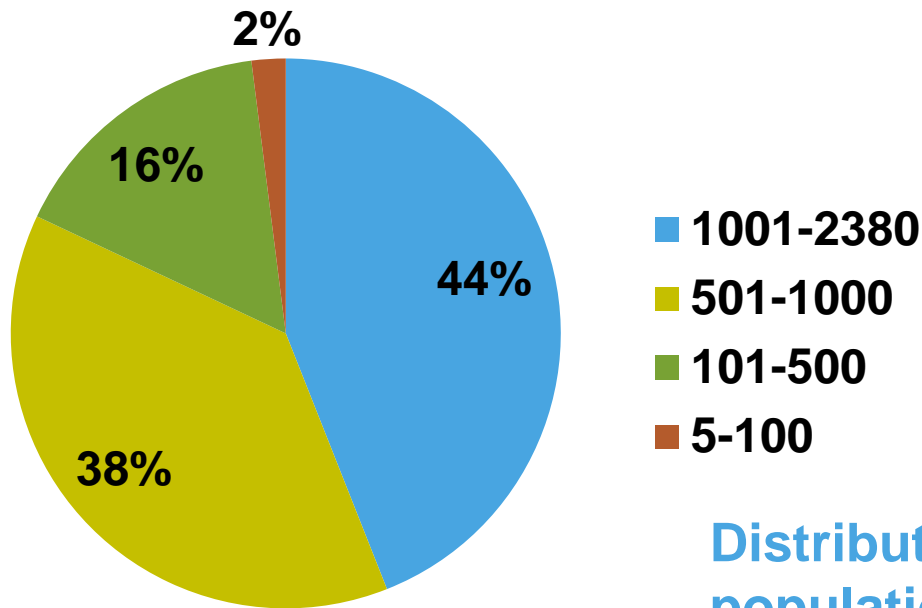


**Nests
in 2003-2018**

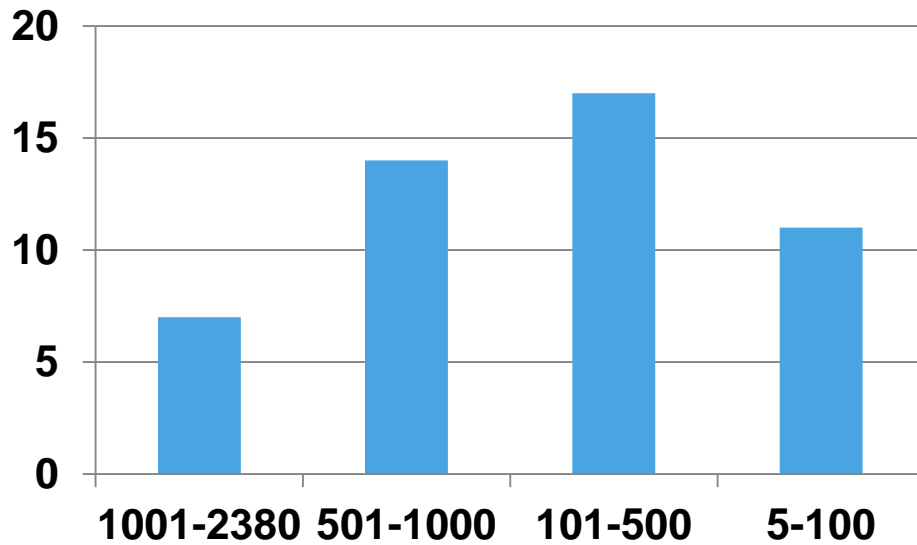


**Population growth %
in 2009-2018**





Distribution (%) of population in relation to colony size 2018



Size distribution of colonies 2018

Cormorants of Finland in a nutshell

- **First breeding in 1996; strong population growth up to 2009; in 2017-2018 annual growth 2-3 %.**
- **Totally 116 colonies with 202 breeding islets or islands have been established during 23 years; in 2018 49 colonies with 85 islets or islands were inhabited with total area of 65 ha; less than 30 ha of forest have been ruined by breeding cormorants since 1996.**
- **Nearly half of colonies (47 %) and of population (41 %) was situated in bird protection areas (Natura 2000 SPA-areas, private protected areas) in 2018.**
- **Illegal persecution has occurred annually in certain sea areas comprising 1-7 % of all nests in 2014-2018.**
- **Breeding period April-July; only few hundreds of cormorants overwinter in SW Finland representing probably the Atlantic subspecies common in Finland also in migration periods.**

Effects on cormorant colonies caused by predation of White-tailed Eagle (WTE) in SW Finland since 2006

- The mean distance between colonies and mainland or major inhabited islands has declined from 4-5 km to less than 2 km.
- The proportion of cormorants choosing to nest in tree-colonies rather than on ground has increased from 30 % to 65 % in the Archipelago Sea, which is the stronghold of the WTE.
- In outer archipelago at least seven colonies have been abandoned because of predation of WTE; largest of colonies included 2,000 nests in 2011, was gradually decreased and finally deserted after 2017 under the pressure of nearly 30 eagles
- The breeding success is estimated to have gone down in several predated colonies and some smaller colonies have failed totally in breeding.





Foto: Antti J. Lind

Ground-nesting colony incubating at Bothnian Sea in 2018

Thank you!

